



## Hydrofoil Rack Installation

**The rack you have purchased has been assembled to fit on the \_\_\_\_\_ side of the boat. It can be disassembled and put back together to fit on the other side. Contact Sky Ski for detailed instructions.**

- 1) Install the adapter to the tower with the 4-3/8 bolts supplied. Tighten all 4 bolts equally so the gap between the 2 halves is approximately the same.
- 2) Open rack by pulling up on the lock ring on the top at the forward end of the rack.
- 3) Install the round disk into the approximately 3" hole in the backing plate and take one 3/8 socket head cap screw and slide it into one of the counter-bored holes in the disk and start the threads into the tower adapter. Rotate the disc so the remaining holes line up with the adapter holes and install the remaining 3/8 Socket head cap screws.
- 4) Tighten all 4 Socket head cap screws lightly then back each one off ½ turn. You should now be able to twist the rack to make it sit level to the boat or what ever angle you want. When you have it in the position you want tighten all 4 Socket head cap screws.
- 5) Now you can close the rack or open it completely and let it lock in place.
- 6) Install the 3/8 button head cap screws through the oval plate into the T-bar adaptor and tighten.
- 7) Peel back the Velcro from the T-bar clamp and pull it out of the large slot in the plate remembering you will put it back together in the reverse.
- 8) Push on the thumb locking mechanism on the other arm and swing it down out of the way. Now you are ready for a ski.
- 9) Lay the ski on the forward arm and line up the T-bar with the center of the clamp, then slide the rear of the ski onto the lower T-bar leg and push the ski against the pack of the rack.
- 10) Press the thumb latch on the forward rack leg and rotate the ratchet arm until it locks the deck down. There are provisions for a padlock on the thumb latch to prevent releasing if you want.
- 11) Thread the Velcro back over the top of the T-bar centered on the plate through the large gap hole. Now pull it as tight as you can and pull it back around and across the T-bar and attach to the exposed Velcro pad. There are 2 rack straps included with your rack. One is longer than the other, so it should be used when your hydrofoil is in the rack with the foil cover on. The shorter strap is intended to be used when the hydrofoil is in the rack without the foil cover.
- 12) To open the rack pull the top forward ring and pull the rack towards you. Swing the rack back until it locks into the rear spring lock. If the rack swings too far and hits the tower you can remove the rear locking spring pin assembly and move it to one of the other holes next to it on the arc. This will limit how far the rack will swing.

**WE RECOMMEND ALWAYS USING A FOIL COVER FOR SAFETY AND PROTECTING THE BOAT.**

You are Done Enjoy!

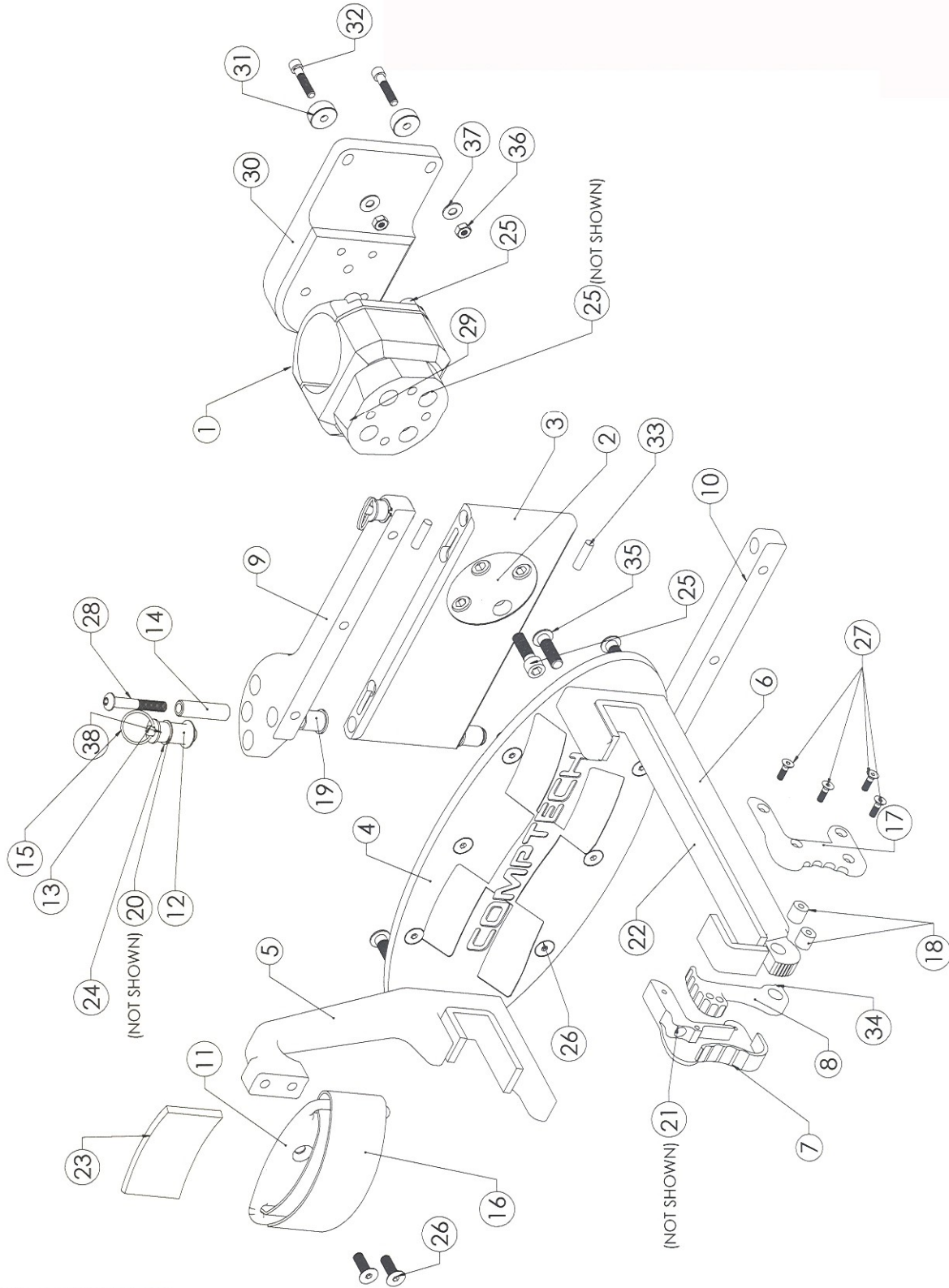


## **Instructions to Dis-assemble Comp-Tech Rack & Re-assemble for opposite side**

- 1) Open #3(hingeplate) slightly
- 2) Remove # 15(SS split ring); this will allow #13, #20, & #38 to drop out.
- 3) Remove # 24 (5/8 retaining ring); #12 will now also drop out. By now the entire lock assembly should be removed. Repeat for the second lock.
- 4) Remove #28 (SS 5/16x18x2.5" buttonhead screw)
- 5) Repeat for bottom
- 6) Remove all six # 26 bolts (5/16x18x.75 SS flathead screw)
- 7) Now logo plate(#4) should be removed and you should be able to lift off #9(lock plate) from #3(hinge plate), and also #10(lower beam) from #3 as well.
- 8) Remove #19(nylon flanged bush) from both lock plate & lower beam.
- 9) Rotate lock plate and lower beam each 180 degrees and push # 19 back into holes going inside-out.
- 10) Re-assemble lock-plate(#9) to logo plate(#4) using part #'s 26, repeat for lower beam.
- 11) Align hinge plate(#3) with lock plate(#9) with clamp wedge (#2) opposite of open locking mechanism on lock plate(#9).
- 12) Insert Hinge pins(#14) thru lock plate and lower beam, into hinge plate, and replace 5/16x18x2.5" ss buttonhead screws (#28)
- 13) Insert lock bush(#12) up thru holes in lock plate and install retaining ring. Put spring (#20) onto lock pin (#13) and push up into lock bush, install washer (#38) onto top of lockpin and then install split ring(#15) into hole on top of lockpin.
- 14) NOTE: part #33, rubber o-ring material will need to be pulled out and switched to opposite ends of hingeplate.
- 15) NOTE: you will also need to swap seat rest(#5) with the arm(#6). (You may NOT need to do this, depending on your application)

# SKYLSKI

HIGH PERFORMANCE HYDROFOILS  
COMPTech MARINE





1/13/2006

810-420 SkiRack Assy BOM

Ref	No. Req	810-420 P.N.	SkiRack Assy Comment
1	1	810-421	SkiRack Tower Clamp
2	1	810-422	SkiRack Tower Clamp Wedge
3	1	810-423	SkiRack Tower Hinge Plate
4	1	810-424	SkiRack Tower Logo Plate
5	1	810-425	SkiRack Seat Rest
6	1	810-426	SkiRack Arm
7	1	810-427	SkiRack Rotating Clamp
8	1	810-428	SkiRack Clamp Lock
9	1	810-429	SkiRack Pivot Lock Plate
10	1	810-430	SkiRack Pivot Lower Beam
11	1	810-431	SkiRack Stem Clamp
12	2	810-432	Lock Bush
13	2	810-433	Lock Pin
14	2	810-434	Hinge Pin
15	2	806-064	SS Split Ring McCarr 90905A655
16	1	810-436	Velcro/Belt Assy
17	1	810-437	SkiRack Clamp Cover
18	2	810-438	Clamp Axles
19	2	806-070	Nylon Flanged Bush 1/2 ID McCarr 6389K622
20	2	806-065	.48 OD X1.5" Compression Spring Mc 9435K111
21	1	806-066	.36 O.D. X 3.5" Compression Spring Mc 9435K118
22	24"	806-075	Self Adhesive Rubber Strip 7/8: widex1/4" thick
23	1	806-075	Self Adhesive Rubber Pad 3.5x2.5x1/4"
24	2	806-072	5100-062 Retaining Rings 5/8" External
25	8	802-9004	3/8-16X1.25 SS SHCS Mc 92196A626
26	8	802-8008	5/16-18x.75 SS Flathead Screw Mc 92210A581
27	4	802-6029	10-32X.88 SS Flathead Screw Mc 92210A307
28	2	802-8007	5/16-18 X2.5" SS Buttonhead Screws
29	1	810-439	Tipper Plate option (requires additional 4 of #24)
30	1	810-440	Optional MasterCraft Adapter (requires 2 of #31 and 2 of #32)
31	2	810-441	MasterCraft Adapter Cup
32	2	802-7021	1/4-20x1.25 SS Socket head bolt
33	2	805-050	1.0 Long X .275" Dia Buna N O-Ring Cord stock McCarr 9407K14
34	1	806-073	SS Roll Pin 1/8" dia X 1/2" Long McCarr92383A252
35	4	802-9005	3/8-16x1.25 SS BHCS
36	2	803-2202	1/4-20 SS Nylock
37	4	804-0122	1/4 SS AN960 .06" Thick washer
38	2	804-0132	5/16 SS AN960 .06" Thick washer